



homes inspired by you

## Farnham

3 bedrooms | Detached | 2 storey



3 Beds

995.7 sqft

- Contemporary design detached home
- Single garage and block paved drive
- Open plan kitchen/diner



homes inspired by you

# Farnham

Room	Metric (mm)	Imperial (ft & in)
Kitchen/diner	5870 x 3489	19' 03" x 11' 05"
Lounge	4706 x 3170	15' 03" x 10' 04"
WC	1052 x 1813	05' 11" x 03' 05"
Master Bedroom	3418 x 3170	11' 02" x 10' 04"
En-suite	2153 x 1357	08' 07" x 05' 11"
Bedroom 2	3394 x 3170	11' 02" x 10' 04"
Bedroom 3	2754 x 2612	09' 00" x 08' 07"
Bathroom	2612 x 1813	08' 07" x 05' 11"

Fairgrove  
 Bridge House, Hardy Close, Kimberley, Nottinghamshire,  
 NG16 2JW.  
 Tel: 0115 944 6700 | [www.fairgrove.co.uk](http://www.fairgrove.co.uk)



[www.twitter.com/  
Fairgrovedev](https://twitter.com/Fairgrovedev)

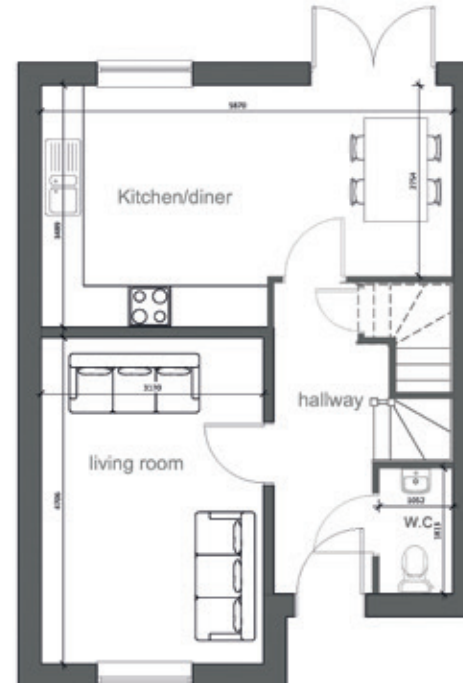


[www.facebook.com/  
Fairgrovedevelopments](https://www.facebook.com/Fairgrovedevelopments)

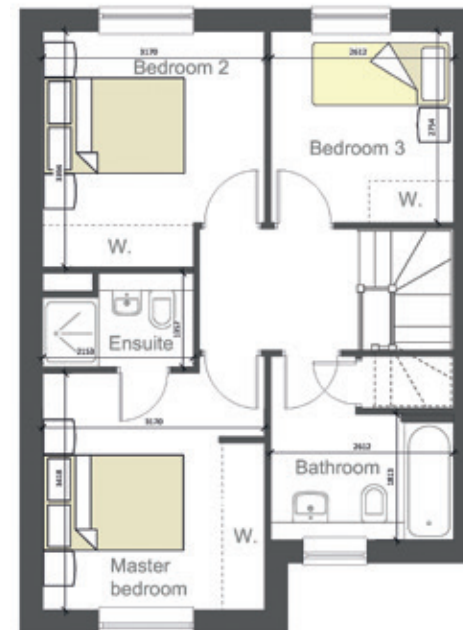


[www.instagram.com/  
fairgrovedevelopments/](https://www.instagram.com/fairgrovedevelopments/)

Ground floor



First floor



\* Images are shown for information purposes only and may vary between Fairgrove developments and house types.

### IMPORTANT INFORMATION

All statements contained in these particulars are believed to be correct but are not guaranteed nor do they form part of any contract or warranty. Unless specified to the contrary interested parties should note the following: 1. All dimensions, distances, and floor areas are approximate and are given for guidance purposes only. 2. None of these statements contained in the particulars or about this property are to be relied on as statements or representation of fact. 3. Any intending purchaser must satisfy themselves as to the accuracy of each of the statements or representation of fact. 4. Whilst we endeavour to make our sales particulars accurate and reliable, if there is any point that is of particular importance to you, please contact the sales office or the selling agents who will be pleased to check the information for you.