



homes inspired by you

Harpley Modern

3 bedrooms | Detached | 2 storey



3 Beds

949 sqft

- Contemporary exterior design
- Open plan kitchen/diner
- Garage and block paved drive



homes inspired by you

Harpley Modern

Room	Metric (mm)	Imperial (ft & in)
Lounge	4659 x 3177 (min)	16' 03" x 10' 05" (min)
Kitchen/diner	4959 x 2860 (min)	16' 03" x 09' 04" (min)
Utility	2012 x 1952 (min)	06' 07" x 06' 05" (min)
WC	1710 x 1090 (min)	05' 07" x 03' 07" (min)
Master bedroom	3486 x 3178 (min)	11' 05" x 10' 05" (min)
En-suite	2569 x 1385 (min)	08' 05" x 04' 06" (min)
Bedroom 2	3171 x 2823 (min)	10' 04" x 09' 03" (min)
Bedroom 3	2865 x 2285 (min)	09' 04" x 07' 06" (min)
Bathroom	2612 x 1700 (min)	08' 06" x 05' 07" (min)

Minimum room size shown, dimensions differ ask for details

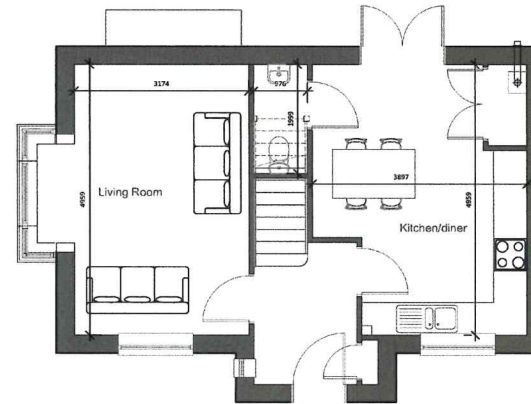
Fairgrove
Bridge House, Hardy Close, Kimberley, Nottinghamshire,
NG16 2JW.
Tel: 0115 944 6700 | www.fairgrove.co.uk

 www.twitter.com/Fairgrovedev
 www.facebook.com/Fairgrovedevelopments
 www.instagram.com/fairgrovedevelopments/

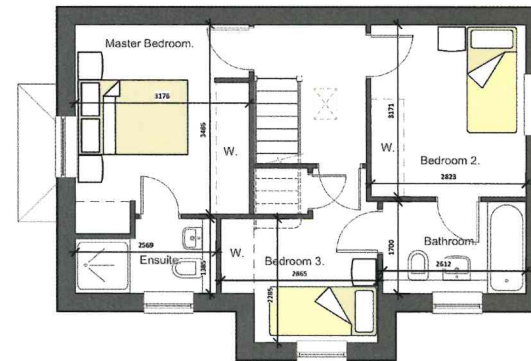
IMPORTANT INFORMATION

All statements contained in these particulars are believed to be correct but are not guaranteed nor do they form part of any contract or warranty. Unless specified to the contrary interested parties should note the following: 1. All dimensions, distances, and floor areas are approximate and are given for guidance purposes only. 2. None of these statements contained in the particulars or about this property are to be relied on as statements or representation of fact. 3. Any intending purchaser must satisfy themselves as to the accuracy of each of the statements or representation of fact. 4. Whilst we endeavour to make our sales particulars accurate and reliable, if there is any point that is of particular importance to you, please contact the sales office or the selling agents who will be pleased to check the information for you.

Standard ground floor



First floor



* Images are shown for information purposes only and may vary between Fairgrove developments and house types.