

Swanwick Fields

Offering executive homes, built in the a style that reflects the charming local Derbyshire stone and slate of the county's countryside.



Welcome to

Swanwick Fields

Fairgrove New Homes are delighted to introduce their exclusive development located on the rural edge of the highly regarded village in Swanwick, near Alfreton in Derby.

Traditionally styled exteriors are combined with contemporary living spaces, to offer the flexibility that todays lifestyles require. With Family and entertaining spaces as well as genuinely spacious bedrooms.

All Fairgrove homes are inspired by you



The Location



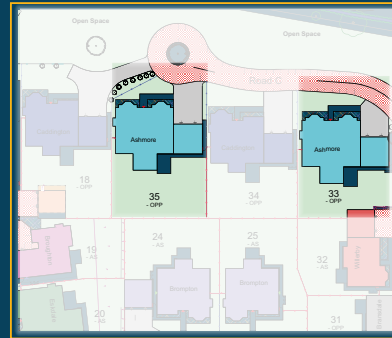
Swanwick Fields

[Play Video](#)

With easy access to countryside walks and cycling as well as excellent transport links to the A38 and M1 junction 28. Swanwick offers a full range of amenities including good schools, a variety of shops, supermarkets, and pleasant eateries & Inns.

Willow House & Beechwood House

Accessed via an exclusive private drive with a pillared entrance and overlooking a serene green space Willow House & Beechwood house provide the largest homes available at Swanwick Fields.



The Ashmore

3500 sqft



Each home combines light and space with high quality interiors and finishes. Specific features include real oak and glass staircases, solid wood painted kitchens and luxury Smeg appliances, bi-fold doors, fitted wardrobes to two bedrooms and study furniture. As well as

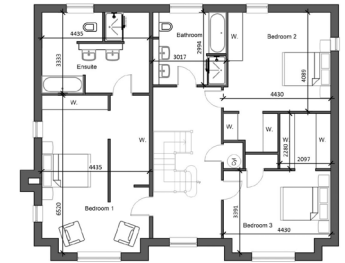
designer bathroom furniture and fittings. Each has a large study, formal dining room, separate lounge, open plan living, kitchen, dining space and a sunroom.

As well as a master bedroom with full bathroom ensuite, two further

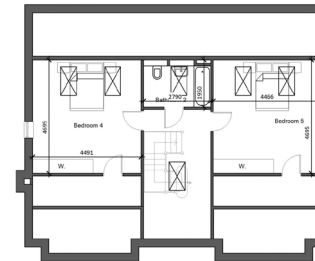
ensuite bedrooms and on the second floor a further bathroom & two large bedrooms. Outside both Willow House & Beechwood House benefit from large double garage with electrical operated doors. There is also a large south facing garden with each of these homes



Ground Floor



First Floor

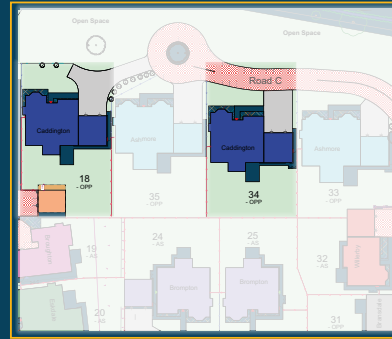


Second Floor



Yew Tree House & Cherrytree House

Located on the same pillared entrance private drive as Willow House & Beechwood House and built to meet the same highest quality interior finish & standards, these homes are designed to combine traditional and contemporary living styles.



The Caddington

2814 sqft



Each has a ground floor study, with fitted study furniture, lounge and separate family room, as well as an open plan living, kitchen, dining space, separate utility room, Five bedrooms, two with fitted wardrobes and private en suite shower

rooms. There is also a spacious family bathroom and a downstairs cloakroom.

Outside each benefit from a large double garage and block paved private drive and each has a sunny south facing

garden. The exterior of these homes are beautifully crafted, built from modern materials which reflect still the character of Derbyshire's country homes. These homes overlook green open space at the front, creating a feeling of exclusivity.



Ground Floor



First Floor

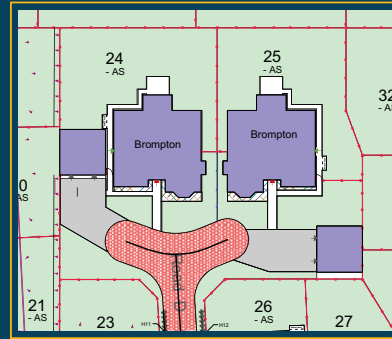


Second Floor



Ivy House & Maple House

Located on an exclusive and private cul-de sac which only serves these two homes, both Ivy House and Maple House has its own large double garage and extensive block paved driveway, as well as a private rear garden.



The Brompton

2246 sqft



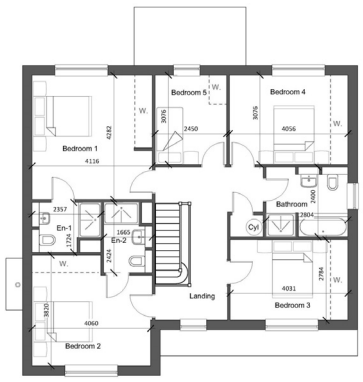
Inside, each of these beautifully designed homes offers large, modern living spaces and separate spaces for both modern families to live and work from home. There is an airy entrance hall, separate

study, lounge, WC, a separate family room and spacious, well designed living, kitchen, dining space with and island which is ideal for entertaining or casually dining. Upstairs a galleried landing gives access to

all 5 bedrooms, two of which have ensuite shower rooms. There is also a family bathroom which is fitted with both a bath and a large separate shower cubicle.



Ground Floor

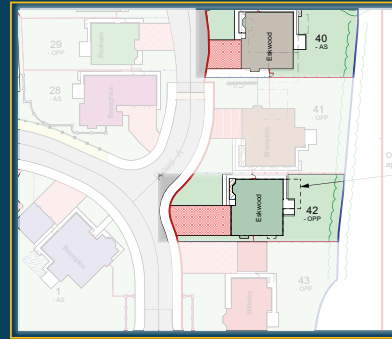


First Floor



Lilac House & Birch House

These two homes offer 5 bedrooms and exceptional living spaces over three floors. Each is located on the final phase of this exclusive development and are not overlooked at the rear. Providing privacy.



The Eskwood

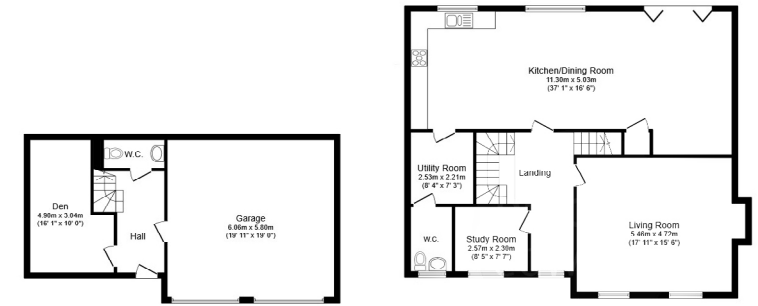
2415 sqft



As you enter the property there is a spacious hall with stairs that ascend to the living spaces. On the ground floor there is a Den/Snug room or second dedicated office and a separate WC. On the upper ground floor there is another spacious

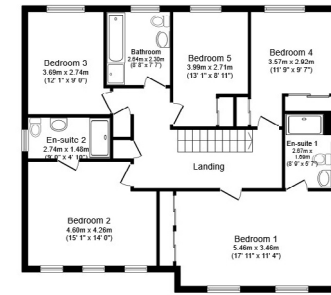
hall, a dedicated study, a lounge as well as an extensive living, kitchen, dining space running across the whole width of these homes. There is also a separate utility room and second WC. On the first floor these home offer a master bedroom suite

with both a walk in dressing room and an ensuite, there is also a second ensuite bedroom and three further bedrooms with a spacious and beautifully fitted family bathroom. Outside these homes offer double garages and black paved drives.



Ground Floor

First Floor

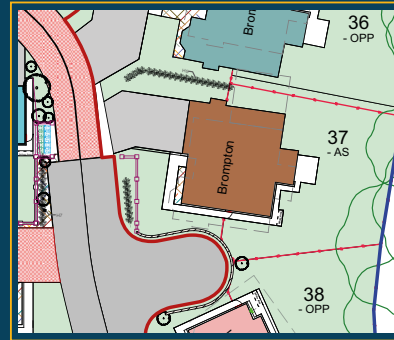


Second Floor



Pinetree House & Rosewood House

Pinetree house & Rosewood House are thoughtfully designed, large, split level, 5 bedroom family homes, located on the edge of the development. Each of these homes has a double garage and a smart blocked paved, private drive.



The Bromwood

2547 sqft



To the rear of the homes, there are extremely private rear gardens with trees and hedges. Views from the front are far reaching over to Derbyshire Peak District. From the ground floor hall stairs rise to the upper ground floor and there is also a large den or second office which has access

to a WC. On the upper ground floor this genuinely spacious family home offers a lounge, separate family room, living, kitchen, dining space, separate study, utility room & a second WC. Whilst on the first floor there are 5 bedrooms, 2 Ensuites and a large family bathroom

with both a bath and a separate shower. Each of these homes have been designed to offer homeowners the space and flexibility needed today as they offer large separate rooms and the less formal open plan social space for friends and family to enjoy.

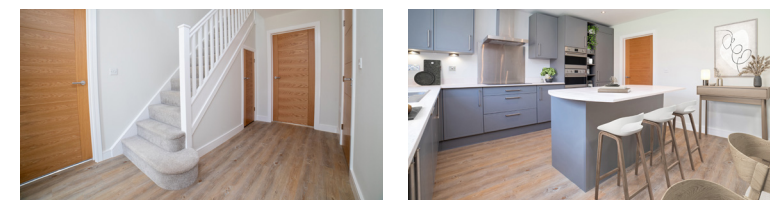


Lower Ground Floor

Ground Floor

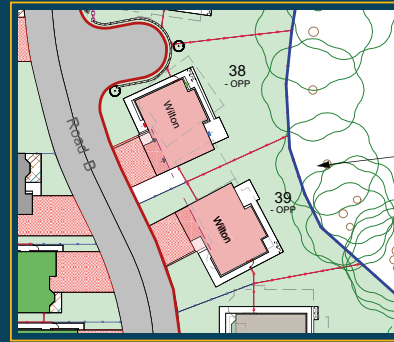


First Floor



Cedar House & Acacia House

Both Acacia House & Cedar house are generously proportioned 4 bedroom split level homes, each located with extremely private elevated rear gardens and views over the Derbyshire countryside to the front.



The Wilton

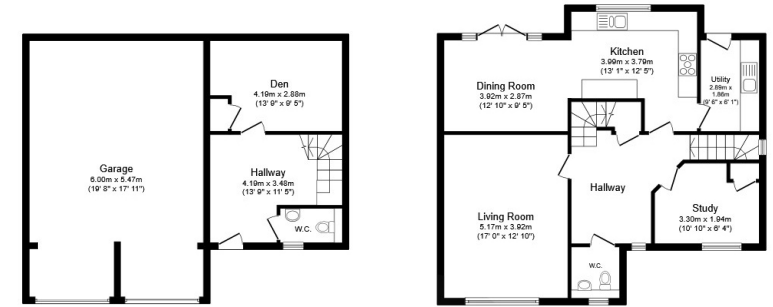
1884 sqft



On the lower level they each offer a double garage, private block paved drive, a spacious entrance hall, a den/second office and WC. Then upstairs to the ground floor there is a light and airy central hall from which a lounge, dedicated study/office, WC, and an

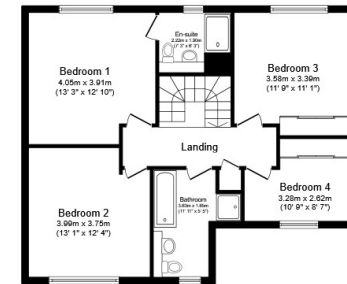
intricately designed kitchen/dining room are reached. There is also a useful separate utility room accessed from the kitchen. On the first floor there are 4 bedrooms, the master bedroom has an ensuite whilst the three remaining bedrooms, two of which are genuine double

rooms, benefit from access to a bathroom which has both a bath and separate shower included as standard! Each of these homes is designed to offer the opportunity to work and play at home!



Ground Floor

First Floor

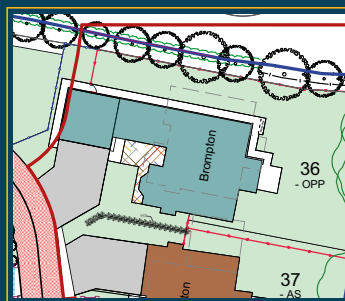


Second Floor



Wisteria House

This exclusive, one of a kind, bespoke home is located on an elevated plot with unrivalled and far-reaching views across the Derbyshire countryside.



The Bromleigh

2792 sqft



An internal staircase ascends to both the main house and a large annexe room located over the garage. Both are connected by a fully glazed, statement hallway. Also accessed from this hall is a den or second dedicated office and a WC.

In the main house there is a separate study, lounge and family room, a spacious living, kitchen, dining space and utility room. On the first floor there are five bedrooms, two of which have high quality ensembles and fitted wardrobes, a

large family bathroom with both a bath & a separate shower serves the three other bedrooms. Outside is a large front garden, block paved drive, double garage & an extremely private rear garden. From the front there are far reaching views.



Contact us Today

07800 614097

swanwickfields@fairgrove.co.uk

Head Office:
Bridge House, Hardy Close,
Kimberley, Nottinghamshire. NG16 2JW.

0115 9446700
info@fairgrove.co.uk